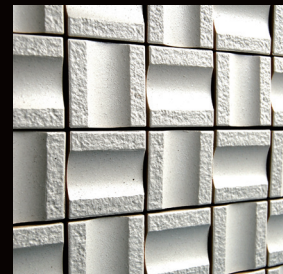
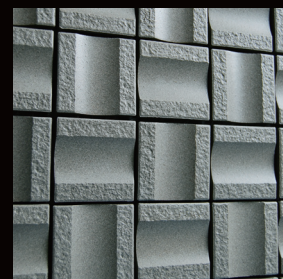


STEEBER

Features smooth& shiny concave and rough& matte convex texture with light and shadow.
By adding lighting, this effect can be enhanced on interior and exterior applications.
It's unique texture comes from our insourcing press mold production skill.



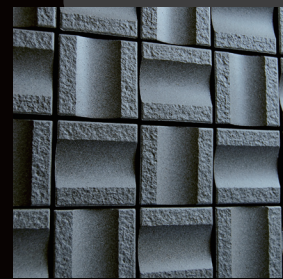
STB-01



STB-02



STB-03



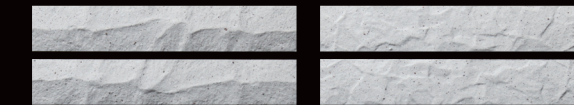
STB-04

Tile size : 47×47mm
Sheet size : 300×300mm
Thickness : 11mm
Sheet per SQM : 11.5sheets
Sheet per box : 14sheets
Weight : approx. 25kg/box
Special colours are accepted by order.

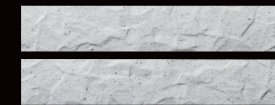


KURUTOGA SELECT

Features 4 different textures and 4 colors that is very flexible blending system in all textures and colors. Select texture and color that you may create on your interior and exterior applications as you like.



KU-01H



KU-01R



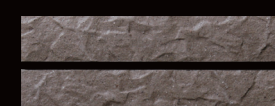
KU-02H



KU-02R



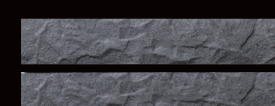
KU-03H



KU-03R



KU-04H



KU-04R



KU-01K



KU-01Y



KU-02K



KU-02Y



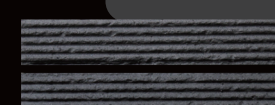
KU-03K



KU-03Y



KU-04K



KU-04Y

Tile size : 227×40mm
Thickness/H : 16mm
/R,K,Y: 11mm
Piece per SQM : 90pcs
Weight : approx. 25kg/box
Special colours are accepted by order.

